

# SAFHE 2026

SOUTHERN AFRICAN  
HEALTHCARE CONFERENCE



9 – 10  
JUNE 2026



CTICC 2  
CAPE TOWN

## Sponsorship and Exhibition Prospectus

Connection · Innovation · Quality · Collaboration · Future-focused · Inclusive



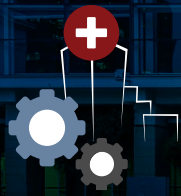
## ABOUT SAFHE

The **South African Federation of Healthcare Engineering (SAFHE)** is the leading professional body advancing the planning, design, and management of healthcare facilities in South Africa. Established in **1974** and nationally constituted in 1975, SAFHE brings together engineers, architects, clinicians, technologists, and industry partners committed to improving the quality, safety, and sustainability of healthcare environments.

As a member of the **International Federation of Healthcare Engineering (IFHE)** since **1976**, SAFHE connects local expertise with global best practice and fosters meaningful collaboration across public and private healthcare sectors. Through knowledge-sharing, professional development, and strategic partnerships, SAFHE provides a platform *where innovation and collaboration actively shape the future of healthcare.*







# SAFHE 2026

SOUTHERN AFRICAN  
HEALTHCARE CONFERENCE

## WELCOME MESSAGE FROM SAFHE

The South African Federation of Healthcare Engineering is pleased to invite prospective sponsors and exhibitors to be part of the SAFHE 2026 Conference, presented under the theme Synergy in Action: Shaping the Future of Healthcare Together.

*This theme reflects SAFHE's commitment to creating environments where expertise, innovation, and industry leadership converge to build resilient, sustainable healthcare systems. Our 2026 tagline, **Innovating Healthcare Through Collaboration**, highlights the vital role our partners play in advancing the sector.*

By aligning your organisation with SAFHE 2026, you position your brand at the centre of meaningful progress. The conference brings together senior decision-makers, designers, engineers, clinicians, facility managers, and industry influencers—all seeking practical, future-focused solutions for healthcare environments.

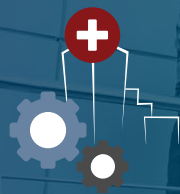
Your partnership enables us to deliver a dynamic, future-focused event where ideas are exchanged, relationships are strengthened, and collaborations take shape. Most importantly, it ensures that the healthcare community has access to the products, services, and expertise needed to improve patient care environments across the region.

On behalf of SAFHE, we invite you to join us in shaping the future of healthcare.

---

*Welcome to SAFHE 2026—where your contribution helps build the healthcare systems of tomorrow.*

---



# SAFHE 2026

SOUTHERN AFRICAN  
HEALTHCARE CONFERENCE

# Sponsorship Opportunities

**Standard Recognition and Branding Benefits:**  
Included with every Sponsorship and Exhibition opportunity:



## PREMIUM ONLINE PRESENCE

Your company profile featured on the official SAFHE 2026 conference website, including:

- Company logo with a description of your sponsorship
- Direct links to your website, social media platforms, and product brochures



## MULTI-CHANNEL VISIBILITY

Logo recognition in all pre- and post-conference communications, including email campaigns and newsletters sent to our full attendee database.



## BRAND ENDORSEMENT RIGHTS

Permission to use the official SAFHE 2026 logo in your own marketing and promotional materials.



## PRINTED RECOGNITION

Company logo placement on the "Sponsors & Exhibitors" page of the official Conference Booklet distributed to all attendees.



## ONSITE BRANDING EXPOSURE

Logo displayed on prominent sponsor banner located in a high-traffic area, ensuring visibility throughout the event.



## ONSCREEN RECOGNITION DURING SESSIONS

Sponsor and exhibitor logos will be prominently displayed on a dedicated slide shown in all concurrent session rooms at the start of each day, ensuring consistent visibility to attendees across the venue.

## Important To Note

- Prices include VAT (15%).
- Each exhibitor package includes two exhibitor passes (the double stand option includes four). These passes provide access to sessions, refreshment breaks, lunch, parking, and networking functions. While they offer the same access as complimentary registration passes, they are designated as Exhibitor badges to assist with event logistics and engagement tracking.
- Complimentary registration passes provide full conference access, including all sessions, exhibition areas, lunch, refreshment breaks, and networking events.
- The exhibition area will be co-located with the conference catering and refreshment areas.
- The exhibition area will be in Hall 9, CTICC 2 and all sessions take place in the adjacent Hall 8 (all traffic passes through the exhibition hall).
- The exhibition area opening hours are 07:30 – 18:00.
- The exhibition manual with all optional extras will be available closer to the conference dates.



## GOLD TIER Sponsorship

**Investment: R145 000**

In addition to the standard recognition and branding benefits, this sponsorship includes the following:

- Recognition as a Gold Sponsor across all materials (website, programme, signage).
- 200-word profile featured on the event website
- One promotional or product video featured on the event website
- Logo prominence: largest size, top tier placement.
- Complimentary Standard 9m<sup>2</sup> Exhibition Stand.
- Complimentary Demo or Workshop in the expo area with first choice of scheduling
- Full-page advert in the conference booklet.
- Acknowledgment in opening and closing remarks.
- 1 sponsored concurrent session (content subject to approval by the scientific committee).
- Social media recognition pre- and post-event.
- **3 (Three) Complimentary Conference Registrations.**

- Option to choose any standalone package and unlock 15% off additional sponsorships to amplify your visibility and impact.



## SILVER TIER Sponsorship

**Investment: R88 000**

In addition to the standard recognition and branding benefits, this sponsorship includes the following:

- Recognition as a Silver Sponsor across materials (website, programme, signage).
- 200-word profile featured on the event website
- One promotional or product video featured on the event website
- Logo prominence: medium size, second tier placement.
- Complimentary Standard 9m<sup>2</sup> Exhibition Stand
- Complimentary Demo or Workshop in the expo area
- Half-page advert in the conference booklet.
- Social media recognition pre-event.
- **2 (Two) Complimentary Conference Registrations.**

- Option to choose any standalone package and unlock 15% off additional sponsorships to amplify your visibility and impact.



# SAFHE 2026

SOUTHERN AFRICAN  
HEALTHCARE CONFERENCE



## BRONZE TIER Sponsorship

**Investment: R49 000**

In addition to the standard recognition and branding benefits, this sponsorship includes the following:

- Recognition as a Bronze Sponsor across materials (website, programme, signage).
  - 200-word profile featured on the event website
  - One promotional or product video featured on the event website
  - Logo prominence: smaller size, grouped with other Bronze sponsors.
  - Logo included on sponsor banner at venue.
  - 50% discount on Demo or Workshop in the expo area
  - **1 (One) Complimentary Conference Registration.**
- Option to choose any standalone package and unlock 15% off additional sponsorships to amplify your visibility and impact.

## NETWORKING

Event Choice of  
Day 1 or Day 2

**Investment: R65 000**

This package includes the opportunity to welcome attendees on arrival, to give a brief welcome address, and to receive recognition from the podium by the MC. In addition to the standard recognition and branding benefits, this sponsorship includes the following:

- 2-minute welcome by the sponsor on the day of the Networking event (if desired).
- Your branding displayed in the networking area (sponsor supplied)
- Social media recognition pre-event
- **1 (One) Complimentary Conference Registration.**







## CONFERENCE Booklet

Investment: R68 500.00  
**Exclusive**

The Official Conference Booklet is included in all attendee conference bags and is a useful post-conference reference.

In addition to the standard recognition and branding benefits, this sponsorship includes the following:

- Your logo displayed on the front cover
- A full page within the opening/welcoming pages of the booklet to be used for the sponsor's editorial content (related to the conference theme) or an advertisement.
- **1 (One) Complimentary Conference Registration.**



## CONFERENCE Bags

Investment: R85 000.00  
**Exclusive**

**High-quality, locally sourced keep-sake conference bags which support South African communities will be given to each attendee at registration.** Your logo will appear on the bag. Please note the organiser will procure and brand the conference bag on your behalf.

In addition to the standard recognition and branding benefits, this sponsorship includes the following:

- Social media recognition post spotlighting the sustainability story
- **1 (One) Complimentary Conference Registration.**
- Option to bundle smartly for a visibility boost by adding Stationery or Name tags and lanyards package at a discount of 15%



## KEYNOTE Partner

Investment: R47 850.00

In addition to the standard recognition and branding benefits, this sponsorship includes the following:

- Acknowledgement in the programme for the Keynote session you are supporting.
- 1-minute video to be played as attendees enter the session.
- Recognition by the MC accompanied by the company logo on the screen prior to the Keynote.
- **1 (One) Complimentary Conference Registration.**



## SESSION Partner

**Investment: R40 000.00**

In addition to the standard recognition and branding benefits, this sponsorship includes the following:

- Acknowledgement in the programme for the concurrent session you are supporting.
- 30 second video to be played as attendees enter the session.
- Recognition at the start of the session by the MC accompanied by the company logo on the screen.
- **1 (One) Complimentary Conference Registration.**



## WORKING Lounge

**Investment: R60 000.00**

**Exclusive**

Host a Working Lounge in the exhibition area, providing a showcase for your brand within a designated area that will attract attendees with comfortable seating and plug points. In addition to the standard recognition and branding benefits, this sponsorship includes the following opportunities:

- Design your own comfortably appointed shared workspace and provide a host from your team to welcome guests.
  - Two options of furniture included in package:
  - **Suggested Layout 1**, Lounge Style: 1 x lounge pocket, 1 x 4-seater table, 1 x 6-seater high table, 1 x branded charging cocktail table.
  - **Suggested Layout 2**, Café Style: 3 x 4-seater tables, 1 x 6-seater high table, 2 x branded charging cocktail tables.
  - Personalise the lounge with your branding – bring pop-ups or discuss with us the best way to showcase your brand in the space (optional, at sponsors expense).
  - Recognition by the MC accompanied by the company logo.
  - **2 (Two) Complimentary Conference Registration.**
- Option to bundle smartly for an engagement power pack by adding a Barista Coffee Bar or Charging Station package at a discount of 15%





## BARISTA Coffee Bar

**Investment: R57 500.00**  
**(Limited to 4 Barista bars)**

Perk up the Conference attendees with delicious coffee served by charismatic baristas.

Extend your message by providing branded disposable cups, cup sleeves, branded mugs (optional, at sponsor's expense) In addition to the standard recognition and branding benefits, this sponsorship includes the following

- Full barista coffee bar provision (i.e. all costs relating to the coffee machines, baristas, coffee and consumables).
- Branding of the Barista Bar with either supplied design or logo (template supplied by organiser)
- **1 (One) Complimentary Conference Registration.**

*Please note: The barista coffee bars are an additional offering to the standard tea and coffee service provided in the exhibition area and are open all day.*



## HYDRATION Station

**Investment: R28 250.00**  
**Exclusive**

Position your company as a champion of health, wellness, and sustainability by sponsoring a **Hydration Station** placed in high-traffic area of the SAFHE 2026 Conference. This branded water refill point offers continuous exposure throughout the day as attendees return to hydrate and recharge.

In addition to the standard recognition and branding benefits, this sponsorship includes the following

- Full hydration station set up (i.e. all costs relating to the water, water dispensers, various fruits, glassware (unbranded), staff to assist and refill the stations, and consumables will be covered by the Conference)
- Branded Backwall at the 9m2 station (template for the design supplied by organiser)
- An option to provide **branded reusable water bottles or cups** (at sponsor's expense)
- MC recognition during the conference for your support of sustainability and attendee wellness
- 1 wellness-themed social post pre-congress
- No complimentary registrations included.





## LUNCH Break

(Choice of Day 1  
or Day 2)

**Investment: R16 150.00  
per day**

Each day lunch will be served in the exhibition area. Organiser to add signage with "Brought to you by..." in the catering area

In addition to the standard recognition and branding benefits, this sponsorship includes the following

- Recognition by the MC prior to the lunch break.
- Company logo displayed on the screen in the auditorium.
- Branding opportunities throughout the catering area (i.e. tablecloths, banners etc. these are for the sponsors expense).

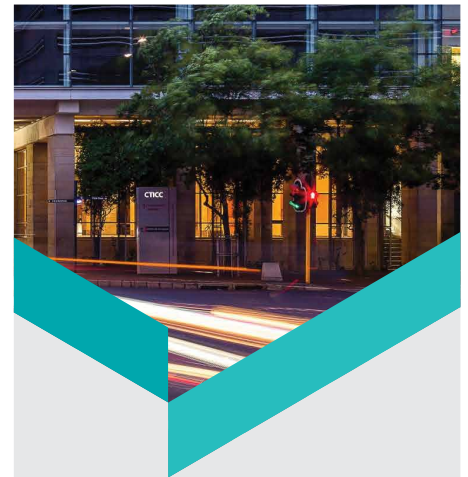


## CHARGING Station

**Investment: R6 150.00  
(Limited to 4)**

Provide charging options in a designated area where attendees and exhibitors can network during breaks.

- The charging unit has an 18" TFT LED display which can be used to display your video content.
- 8 lockable charging bays.



## NAME BADGES & Lanyards

**Investment: R35 000.00  
Exclusive**

Each attendee wears a personalised name badge and lanyard for the duration of the conference.

In addition to the standard recognition and branding benefits, this sponsorship includes the following

- A conference name badge and lanyard, procured by the organiser, with the sponsor's logo alongside the conference logo.
- Option to bundle smartly for a visibility boost by adding the Conference Bags or the Stationery package at a discount of 15%

## STATIONERY Sponsor

**Investment: R45 000.00**

### Exclusive

Each attendee receives a branded notepad and pen to use for the duration of the conference, branded with the sponsor's logo alongside the SAFHE 2026 logo.

In addition to the standard recognition and branding benefits, this sponsorship includes the following:

- A conference notepad and pen, procured by the organiser, with the sponsor's logo alongside the conference logo.
- QR code on the notepad linking to the sponsor's chosen URL.
- Option to bundle smartly for a visibility boost by adding the Conference Bags or Name Badges & Lanyards package at a discount of 15%



## PHOTOGRAPHY Partner

**Investment: R30 000**

### Exclusive

Capture the moments that matter most. As the **Photography Partner**, your brand will be front and centre in the visual storytelling of SAFHE 2026. This sponsorship offers high-impact exposure via the conference photo galleries and a professionally produced highlights reel which will be distributed across our digital platforms and archived for ongoing visibility.

In addition to the standard recognition and branding benefits, this sponsorship includes the following:

- Logo placement on the official highlights video.
- Sponsor-branded photo gallery, accessed post-event.



## CPD Sponsor

**Investment: R30 000**

### Exclusive

A highly visible branding position as each participant will need to scan a sign with your logo on it in order to claim their CPD points. The CPD certificates that are issued will also incorporate your logo.

This sponsorship only includes the standard recognition and branding benefits, no complimentary registrations are included.







## PRINTED ADVERTISEMENT in the Conference Booklet

**Double page advertisement in our A5  
Conference Booklet**  
R13 000.00

**Full page advertisement in our A5 Conference  
Booklet**  
R9000.00

**Half page advertisement in our A5  
Conference Booklet**  
R4 000.00



## CONFERENCE BAG Insert

**Investment: R8 500.00**  
A5 pamphlet provided by the sponsor will be included  
in the attendee bag which will be given to each  
participant at registration.



# SAFHE 2026

SOUTHERN AFRICAN  
HEALTHCARE CONFERENCE

# Exhibition Opportunities



## STANDARD Exhibition Stand - 9m<sup>2</sup>

**Investment: R35 000.00**

3m x 3m exhibition stand package includes:

- Tension fabric walls, fascia name board, carpeting, illumination (2 longarm lights), and an electrical plug point (15 amp).
  - o Note: The fabric walls can be printed on (highly recommended) – for the exhibitor's account.
  - o **No furniture** is included in this package – bring your own or order through the service order link provided in the Exhibition Guide.
- 2 (Two) full access exhibitor passes including lunch, refreshment breaks, sessions and all networking events.
- An A5 conference bag insert (exhibitor to provide).
- Standard recognition and branding benefits.



## DOUBLE Exhibition Stand - 18m<sup>2</sup>

**Investment: R63 000.00**

3m x 6m exhibition stand package includes:

- Double up on the standard exhibition stand and enjoy 20% off on the extension
- Tension fabric walls, fascia name board, carpeting, illumination (2 longarm lights), and an electrical plug point (15 amp).
  - o Note: The fabric walls can be printed on (highly recommended) – for the exhibitor's account.
  - o **No furniture** is included in this package – bring your own or order through the service order link provided in the Exhibition Guide.
- 4 (Four) full access exhibitor passes including lunch, refreshment breaks, sessions and all networking events.
- An A5 conference bag insert (exhibitor to provide).
- Standard recognition and branding benefits.



## FLOOR SPACE Only (for a custom stand)

**Investment: R30 550.00**

3m x 3m floor space only package includes:

- An electrical plug point (15 amp)
- 2 (Two) full access exhibitor passes including lunch, refreshment breaks, sessions and all networking events.
- An A5 conference bag insert (exhibitor to provide).
- Standard recognition and branding benefits.



# SAFHE 2026

SOUTHERN AFRICAN  
HEALTHCARE CONFERENCE



## EXHIBITION Launch Pad

**Investment: R22 500.00**

1.5m x 1.5m turnkey exhibition stand solution includes:

- 1.5m wide x 2.4m high branded tension fabric backing wall, carpeting, illumination (1 x longarm light), and an electrical plug point (15 amp).
- Café table and 2 chairs.
- 2 (Two) full access exhibitor passes including lunch, refreshment breaks, sessions and all networking events.
- An A5 conference bag insert (exhibitor to provide).
- Standard recognition and branding benefits.



## EXHIBITOR DEMO & Workshop Add-On

**Investment: R25 000.00**

### Bring Your Brand to Life

Exhibitors have the exclusive opportunity to host a live demo or interactive workshop in the exhibition area – designed to showcase your products, services, or innovations in action. This add-on allows you to create a hands-on experience that engages attendees, sparks meaningful conversations, and positions your company as a solution provider.

### What's included:

- Dedicated 30 – 45-minute session
- Branded presentation space with signage and AV support (screen, mic, projector)
- Listing in the conference programme with title, description, and presenter details
- Pre-event promotion via email and social media to drive attendance

## Contact us

**SAFHE Conference Partnerships  
K.I.T. Group - African Agenda**

**Laura Armstrong**  
Email: [larmstrong@kit-group.org](mailto:larmstrong@kit-group.org)

**BOOK NOW >>**